



March 31 – Neshannock Creek Railroad Bed Cleanup, Site #1

When: Saturday, March 31, 2001, 7:30 - Noon (Meet at the Parking area noted under the directions)

Directions: From New Castle: Take Route 168 toward Eastbrook. Just before Eastbrook there is an intersection, Devils Elbo Road is to the right, and on the left (north) is Covered Bridge Road. Turn onto Covered Bridge and follow it for a about 3 miles. At the stop sign at Route 956, continue straight. Cross the covered bridge and go down the road a little way. The railroad bed is lined by trees, and there is a parking area just to its north.

This old site is located right next to the Neshannock Creek in the delayed harvest fish-for-fun section of the Neshannock Creek.

April 7 – Neshannock Creek Railroad Bed Cleanup, Site #2

When: Saturday, April 7, 2001

Time: 7:30 - Noon (Meet at the Wilmington Twp Municipal Bldg between 7:30 & 8 a.m.)

Directions: From New Castle: Take Route 18 north. At the "Y" in the road, veer right onto Route 158. Take the first right onto Wilson Mill Road. The municipal building is on the left just before the next left in the road.

From the east: Take Route 956 toward New Wilmington. Continue straight at the Mercer Road stop sign to stay on 956. After the bend, 956 makes a sharp right (the next right). Continue straight onto Wilson Mill Road. The municipal building is on the right in the middle of the next "Y" in the road.

Important Cleanup Info

Be sure to wear:

- Gloves
- Jeans
- Long-sleeved shirts
- Thick-soled shoes w/traction for climbing.
- Because of safety concerns we do not allow anyone under 8 years old at dump cleanups.

We work rain, snow (no blizzards!), or shine!!!

May 5 – Beechwood Road Property

When: Saturday, May 5, 2001, - 7:30 - Noon (Meet at the site, located on Beechwood Road, just outside of New Wilmington)

Directions: From New Castle, take Highland Ave/Mercer Rd north. Continue past Pearson Park for 2 miles. At the next intersection, turn left on Rt. 956. Take the next right, remaining on 956, and follow it into New Wilmington. Just before the Boro park, turn left onto Beechwood (across from Westminster College). Go through 2 stop signs. The property is the fourth house on the left after the second stop sign.

A situation involving illegal dumping that is becoming more common occurs with the purchase of a new property, especially in rural areas. This was the case when Alice Sankey moved into her Wilmington Township home 13 years ago. Alice never imagined what lay beneath the snowy hillside on her property. Out of the melting snow, a dump site emerged. Alice found out about the PACW program, and as a result was able to get help with her problem. This will be a normal one-day cleanup due to the size of the site.



Last year's cleanup in action

Mercury Collection Scheduled

Get rid of a health hazard! A FREE mercury collection program will be held in Lawrence County in April. In order to participate, simply call the Lawrence County Recycling/Solid Waste Department at 658-6925 to schedule a pickup. Who can participate? All residents, schools and most non-profits. Items that are eligible for the collection are: elemental mercury, light switches, thermometers, barometers, and thermostats. The County of Lawrence, in cooperation with the PA Department of Environmental Protection, is organizing the collection and proper disposal of all eligible items.

May 12 – Jockey Moore Road Maintenance

When: Saturday May 12, 2001 – 7:30 - Noon (Meet at the Wayne Township Municipal Building between 7:30 and 8 a.m.)

Wayne Township's model PACW program is our last scheduled cleanup for the spring. Thanks to an aggressive enforcement partnership between Wayne Township and Lawrence County Environmental Services, this is a walk in the park as far as cleanups go. In addition to the Jockey Moore Road cleanup, Wayne Township residents who want to clean their road of trash and litter, during that week, can contact the township supervisors at 752-1361 to register.

PACW Growing Greener Info on the Web

Want to find out what's happened or is planned for our watershed assessment and cleanup project? Visit our web page that is provided free from DEP for its Growing Greener Grant recipients.

Go to www.dep.state.pa.us and type "G2 Directory" in the direct-LINK box. You will be transferred to the directory which lists the currently posted projects.



Toner and Ink Jet Cartridge Recycling Day – June 16

As part of our partnership with the Lawrence County chapter of the Pennsylvania Association for the Blind, we are still working on setting up several drop-off locations for spent ink jet and laser cartridges.

In the meantime, anyone that wants to recycle their spent cartridges can drop them off at the tire collection sites between the designated times on June 16. Please see page 4.

New Staff Hired

Last October we were awarded a \$10,000 chapter development grant from the state organization to hire staff. Jerry Zona, our current Growing Greener Project Manager, will now be serving as our Executive Director. Carrie Fowler, a 199X Westminster College graduate from New Wilmington has been hired for the position of Associate Director. In related news, Jerry, a chapter founder, will be leaving his job of more than nine years with Lawrence County to work for the state organization of PA CleanWays full time. The state is setting up a regional office to meet the growing needs of the organization, and has hired Jerry as the regional coordinator to serve western Pennsylvania.

Growing Greener Project Report

The original project technician, Jon Carey, resigned due to his wife being relocated to Columbus. We wish him the best. Janet Cunningham was hired to fill the vacancy. Jan previously worked as the Jefferson County Recycling Coordinator and was one of the founders of the Jefferson County chapter of PA CleanWays. We are happy to have her on board.

On September 26 a media event, arranged by the PADEP, was held at a dump site along the Shenango river in the City of New Castle. The event was attended by representatives from two local newspapers, DEP, and PA CleanWays. As a result

of the subsequent press, PA CleanWays was contacted regarding the location of a dump area along the Connoquenessing Creek.

Preliminary assessment work has focused on the development of a comprehensive dump site assessment form and a review of the waterways to be assessed. Data pulled from a 1996 Lawrence County illegal dump report showed seven sites already identified as a result of complaints or county road investigations.

In December, Jan surveyed a portion of the Connoquenessing Creek, including the site identified as a result of the media event. An investigation of the area

resulted in the identification of two sites. A complete assessment was not possible because of the snow. The sites will be returned to for a complete assessment after the snow melts.

The Telephone Pioneers of America, Fort Pitt Chapter, Neshannock Creek Fly Shop, and Pagley's Pasta and Pizza signed on as new financial supporters of the project!



PA CleanWays Receives Governor's Excellence

PA CleanWays state organization was recently recognized with a 2000 Governor's Award for Environmental Excellence at a ceremony in Harrisburg Dec. 19. Governor Tom Ridge presented the award to 43 different recipients from across the state.

The award recognized PA CleanWays' cooperative efforts in cleaning illegal dumpsites and for the long-term effects these cleanups have on local economies. PA CleanWays has recorded success throughout the commonwealth, not only in cleaning sites, but also in discouraging additional dumping.

The Governor's Award noted PA CleanWays cleanup and adoption activities for 1999. More than 100 tons of trash, 2,000 tires and 38 tons of scrap metal were removed from Pennsylvania lands and waters during 86 organized litter and illegal dump cleanups.

Cleanups and other programs are organized and supported locally through PA CleanWays chapters. There



PACW was recognized for its work helping to clean sites like this, one of Lawrence County's largest known sites.

are 13 chapters in operation, including Lawrence County's. The establishment of an additional seven chapters is already underway for 2001.

Major Support Received for the Watershed Cleanup Program

We would like to give a sincere thank you to the Fort Pitt Chapter of the Telephone Pioneers of America for their financial support of our watershed assessment and cleanup project. The Pioneers have provided the chapter with \$1,000. These monies, along with those from the New Castle Junior Woman's Club, S&S Processing, Neshannock Creek Fly Shop, and Pagley's Pasta and Pizza will be used

for the project.

Last year the Pioneers sponsored our Fugitive Tire Program and Tire Recycling Day.

Volunteers from the Telephone Pioneers have participated in past PA CleanWays-sponsored events. The Telephone Pioneers local membership numbers about 6,000 active and retired Bell Atlantic employees. Many of their activities involve children and

the elderly. Some of their involvements include: reading "I Like Me" books to kindergartners, Christmas in April, Habitat for Humanity, community cleanups, Special Olympics, and making Hug-A-Bears for police and fire departments to give to traumatized children. They work with many concerned organizations to combine energies and talents to maximize the full power of volunteerism.

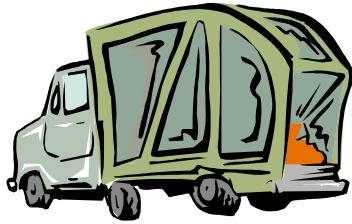
Reduce, Reuse, Recycle...Stopping Trash at the Source

Did you know that more than half of the people taken to court for illegal dumping claim that they hired someone to remove their trash? Unfortunately, most of these transactions are not backed by proof, such as a receipt or a cancelled check.

Any person or business that hauls any Lawrence County trash for payment is required to obtain a hauling license from the Lawrence County Environmental Services Department. The next time you look for someone to clean out your garage or basement, contact the Environmental Services Department at 658-6925 to verify that they are licensed. The department can also provide you with the current list of licensed haulers.

Licenses expire December 31 and must be renewed yearly.

Follow these tips to make sure you hire a licensed hauler. 1.) Look for the 2-inch square license on the driver's side of the vehicle, usually the door. It has the license year in an outline of the county. 2.) Expect to pay more. Trash is expensive! 3.) Always demand a receipt, pay by check, and note the purpose on the check.



Pennsylvania Forest Lands Beautification Program Update

More than 130 volunteers and contractors helped clean up 45 tons of trash and 24 tons of recyclable metal at 14 state forest and state park dump sites last year under the PA Forest Lands Beautification Project according to DCNR, the state agency administering the program. In addition to the trash and metals, nearly 1,000 tires and several gallons of used motor oil were hauled up embankments, fished out of wetlands and streams, and loaded for proper disposal and recycling from March through November.

PA CleanWays state organization was contracted by DCNR to develop the strategies and methods for the cleanups. PA CleanWays' community-based approach

will be used over the next four years to help promote broad-based stewardship for these public lands.

In 2000, volunteers donated more than 300 hours, assisting DCNR forestry personnel and contractors in removing appliances, building debris, furniture, household trash, car parts and other trash.

To learn more and to see digital images of the cleanups, visit <http://www.CleanPAForest.org>, phone 877-772-3673, or e-mail paforest@pacleanways.org. Groups interested in obtaining grants for cleanups may locate information on the web site or call DCNR at 717-772-9104.

PA CleanWays of Lawrence County Membership/Newsletter Form

Individual \$10.00 Date _____
 Family \$15.00
 Sm. Business/Org. (1- 25 employees) \$25.00
 Med. Bus./Organization (25-50 employees) \$50.00
 Lg. Bus./Org. (more than 50 employees) \$100.00
 Special Donation to help with projects

Name _____

Address _____

Phone (h) _____ (w) _____

E-mail _____

This information is used to communicate with you. It is not shared with anyone else. Contributions are tax exempt as allowed by law.

Check here to receive future newsletters.

Check here to discontinue receiving newsletters.

I am also willing to:

Help at cleanups

Help organize cleanups/special events

Help at special recycling events

Attend monthly meetings

Donate services or equipment

Participate in education projects

Help raise financial support

Help recruit new members

Other _____

New Watershed Cleanup Sponsors

Neshannock Creek Fly Shop

New Castle Junior Woman's Club

Pagley's Pasta & Pizza

S & S Processing

Tri-County Industries, Inc.

Existing Supporters

Trout Unlimited, Neshannock Chapter

League of Women Voters of Lawrence County

City of New Castle

Penn-Ohio Watershed Association

Second Wind Running Club

Wilmington Township

Telephone Pioneers, Fort Pitt Chapter

Wayne Township

PA CleanWays, State Organization

Lawrence County Commissioners

Lawrence County Environmental Services

Support Needed for Pymatuning/Shenango Watershed Plan

The Penn Ohio Watershed Association serves Crawford, Mercer, and Lawrence counties in PA, Trumbull and Ashtabula counties in OH. The association is a grass roots organization working to protect natural resources throughout the Pymatuning/Shenango Watershed. Comprised of local agencies and concerned citizens, the association was created in 1994 to address concerns regarding the water-

shed's health. In 1997, the Interstate Pymatuning/Shenango Project was designed to help eliminate nonpoint source pollution by two means. The first, cost-sharing, enables the project to assist the landowners to use environmentally friendly practices. The second is to educate the people living in the watershed area about the problem and let them let them know how they can help solve it. In 1999, the Interstate

Pymatuning/Shenango Watershed Plan began its development when Davey Resource Group was tapped to create a ten-year watershed action plan addressing the conservation issues within the watershed. This plan will inventory and assess the resources, problems, and opportunities within the watershed. Problems will be prioritized and actions for implementation will be recommended. Portions of the plan will include

information on goals and objectives of watershed protection, local organization support, riparian corridor land uses and ownership, and existing water quality. Public input is a major element of the plan. Several public forums were held in January and February. For more information, please contact Amy Reeher at (330) 637-2056, extension 3 or e-mail amy-reeher@oh.nacdnet.org.

PA CleanWays of Lawrence County

P.O. Box 581

New Castle, PA 16103

724-654-6041

zona@ccia.com



CleanWays – What we're All About

PA CleanWays is a nonprofit organization that fights illegal dumping and littering. We facilitate the cleanup of areas affected by illegal dumping, we address problem items, such as tires, and we educate the public on proper waste disposal and the environmental and personal consequences of improper disposal.

If litter and trash thrown along the roads personally offend you, join us in the fight. Your contribution can be your dues, or you can join us in our other activities. We need all levels of support.

Visit PACW on the Web

Want more info about PA CleanWays! Visit the organization's web site at: www.pacleanways.org



June 16 – Tire & Ink Jet/Laser Cartridge Recycling Day

Residents can drop their tires and spent copy machine, ink jet and laser printer toner cartridges at the following Lawrence County locations and times:

Wal-Mart: (by the service station) 10 am - 2 pm

Wayne Twp VFD: 9 am - 1 pm

Wilmington Twp. Municipal Building: 9 am – 1 pm.

Donations: **\$1 per car tire**
 \$2 per light truck tire
 \$5 per tire on rim donation
 Ink jet & toner cartridge recycling is free!!!
 (please bring cartridge box if you have it)

There is a limit of 8 tires per person. A light truck tire is anything larger than 235 75 15 or a 16 1/2 rim size.

Because of the process used for tire disposal, we can only accept whole, clean, and dry tires. For more information contact Jerry at 658-6925.

People using our program have turned in more than 4,700 tires since it was started in 1997.



PACW Meeting Info

The chapter meets the third Thursday of each month at 7:30 p.m. Meetings are held at the Lawrence County Government Center in the Commissioners Meeting room.

2001 Schedule

April 20

May 18

June 15

July—No meeting

August—to be announced

September—Annual Mtg.

October 19

November 16

December—No meeting

Chapter Achievements 1993-2000

- Cleaned up twelve (12) sites.
- Twenty-six (26) cleanups.
- Removed more than 171 tons of trash.
- Recycled 39 tons of the removed trash.
- Removed more than 4,000 tires from roadways.
- Collected more than 4,700 tires from residents.
- Recycled 21 tons of magazines.
- Recycled more than 100 appliances.
- Received help from 1,100 volunteers and sponsors.